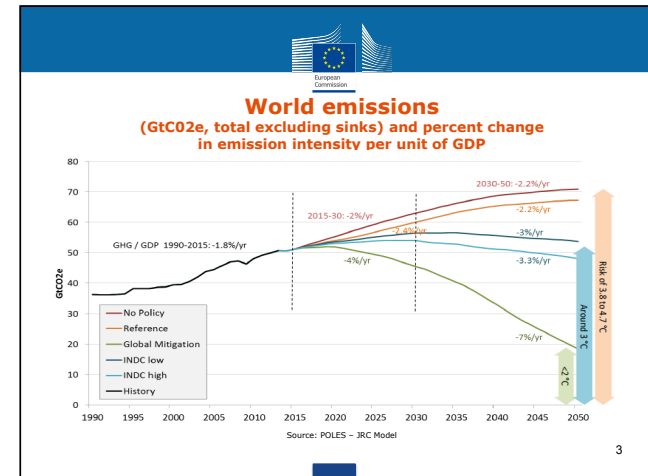





**PARIS2015**  
COP21-CMP11

## EU Klimaatbeleid

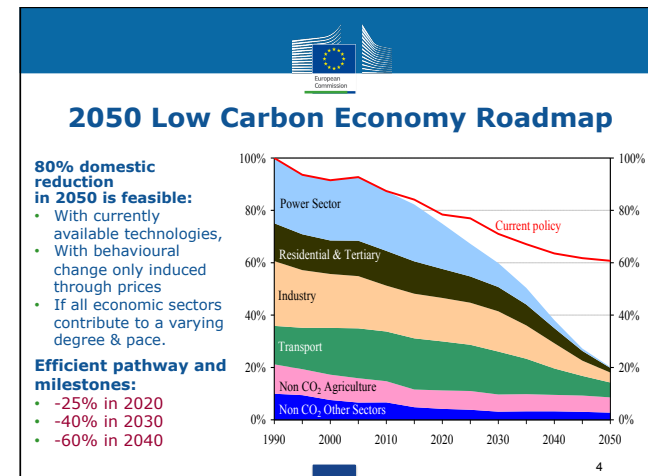
28 juni 2016  
Tom van Ierland  
DG Klimaat  
Afdeling C1 Strategie en Economische Analyse  
Europese Commissie

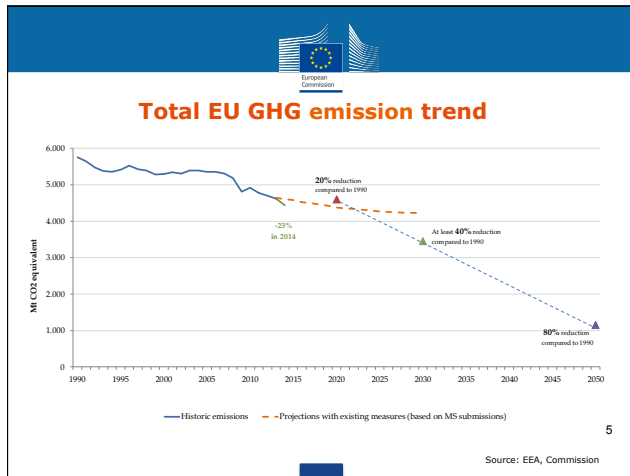



### The Paris Agreement

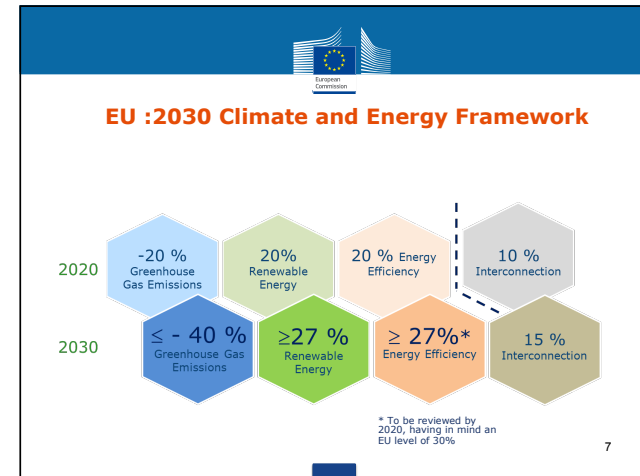
- A legally binding, universal agreement
- Ambitious long-term goals (well-below 2°C/pursue 1.5°C/global peaking asap/climate neutrality in the second half of the century)
- Dynamic 5-year ambition cycle
- Enhanced transparency and accountability
- Greater emphasis on adaptation
- Support for poor and vulnerable countries
- 189 nationally determined contributions (NDCs)

2

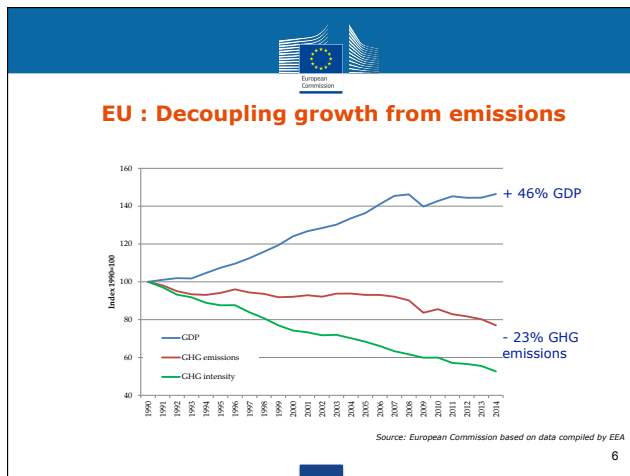




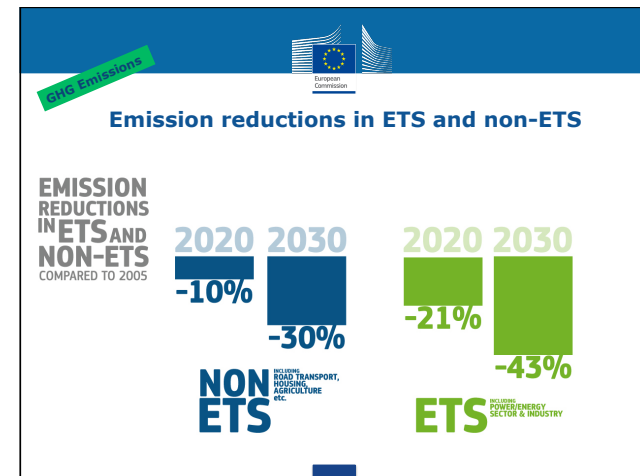
5



7



6




  
European Commission

## European Energy Union

*A secure, sustainable, competitive, affordable energy for every European*

- 1. Energy security, solidarity and trust** - less dependent on energy from outside the EU
- 2. A fully integrated European energy market** - Energy should flow freely across the EU without any technical or regulatory barriers
- 3. Energy efficiency** - Rethink energy efficiency as an energy source in its own right
- 4. Decarbonising the economy** - ambitious climate policy is a cornerstone of Energy Union – continue to decouple GDP growth from GHG emissions; enforce the 2030 framework; become number one in renewables; central role for EU ETS; Effort Sharing Decision
- 5. Research, Innovation and Competitiveness** - Develop EU technological leadership in low carbon technologies


→315bn EUR **Investment Package**

  
European Commission

## Guidance for determining non-ETS targets

GHG Emissions

- Member State targets between 0% and -40%
- Maintain current methodology, update GDP/capita data
- Member States with GDP/capita above EU average: targets adjusted with **cost effectiveness**
- Enhanced flexibility to ensure **cost efficiency**, new flexibility mechanisms subject to several constraints
- Integrate LULUCF into the 2030 climate and energy framework

  
European Commission

## Important policy initiatives under the Energy Union


**2015**

- ETS review

**2016**

- EU ESD : targets for MS including LULUCF
- Transport decarbonisation
- Energy efficiency
- Electricity market design
- Renewables (including biomass, biofuels)
- Integrated climate and energy governance

10

  
European Commission

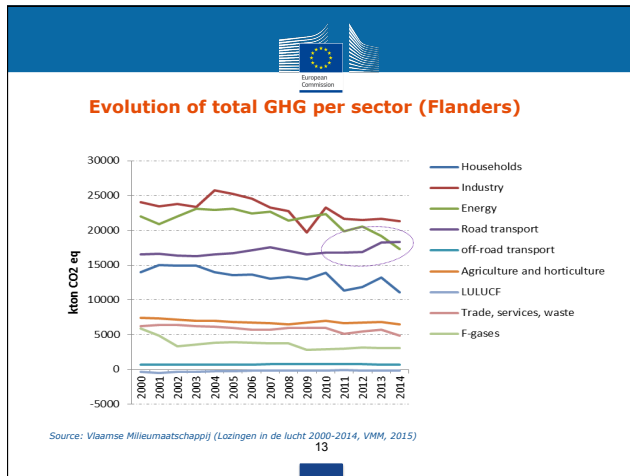
## Governance

Building blocks of a 'governance mechanism

- 'guidance document', 'key indicators document' and 'country fact sheets'
- + upcoming proposal (2016) on streamlining of energy and climate planning and reporting obligations
- + upcoming guidance on regional cooperation

Guidance for MS 'National Energy and Climate Plans' covering all five dimensions and covering 2021-2030

- description of current situation
- set out objectives and policies, across dimensions
- make projections (reference scenario, policy scenario)
- strong focus on regional dimension (avoiding adverse effects on neighbouring countries)



**Thank you!**

Visit DG Climate Action online:

- [ec.europa.eu/clima/](http://ec.europa.eu/clima/)
- [facebook.com/EUClimateAction](https://www.facebook.com/EUClimateAction)
- [twitter.com/EUClimateAction](https://twitter.com/EUClimateAction)
- [pinterest.com/EUClimateAction](https://www.pinterest.com/EUClimateAction)
- [youtube.com/EUClimateAction](https://www.youtube.com/EUClimateAction)

DECEMBER Paris Climate Conference COP21